

FINAL PROGRAM

Modeling and Control of Economic Systems

SMIE 2001

IFAC

**6-8 September 2001
University of Klagenfurt
Department of Economics
AUSTRIA**

Scope and Topics

SME 2001 – the 2001 IFAC Symposium on Modeling and Control of Economic Systems – is being organized by the Department of Economics, University of Klagenfurt. In addition to the IFAC Technical Committee on Modeling and Control of Economic Systems (SME), which is the main sponsor, the IFAC Technical Committees on Business and Management Techniques (SMB), Large Scale Systems (SML), and Optimal Control (DMO), and the Society for Computational Economics (SCE) act as co-sponsors.

This symposium aims at bringing together scientists and users to explore current theoretical developments of modeling techniques for economic systems. Operating at the interface between economics and engineering and comprising related areas like econometrics, statistics, computer sciences, or operations research, the spectrum of the symposium will include theoretical and computational methods and tools for decision and control in economics and management.

Special topics and focal points will include among others:

Modeling Approaches in Economics and Engineering

- Econometric models
- General equilibrium models
- Models with explicit expectations and learning
- Agent-based models
- Neural networks

Estimation and Identification of Economic Systems

Computation in Economics and Engineering

- Modeling languages
- Software tools and algorithms
- Artificial intelligence
- Genetic and evolutionary programming
- Decision support and expert systems

Planning and Control of National and Regional Economies

- Optimal control
- Forecasting
- Dynamic games
- Multi-country models

Modeling and Control for Business and Management

- Operations research applications
- Applications in finance

Program Overview

	Wednesday 05.Sep.01	Thursday 06.Sep.01	Friday 07.Sep.01	Saturday 08.Sep.01
9:00-9:30		OPENING / PLEN. SESSION P1	PLENARY SESSION P2	PLENARY SESSION P4
9:30-10:00				
10:00-10:30		Coffee Break	Coffee Break	Coffee Break
10:30-11:00		Parallel Sessions S1.1 - S1.5	Parallel Sessions S4.1 - S4.5	Parallel Sessions S6.1 - S6.3
11:00-11:30				
11:30-12:00				
12:00-12:30				CLOSING OF THE CONFERENCE
12:30-1:00		Lunch Break	Lunch Break / SME TC Meeting*	
1:00-1:30				
1:30-2:00				
2:00-2:30	Registration open from 2 PM - 8 PM	Parallel Sessions S2.1 - S2.5	PLENARY SESSION P3	
2:30-3:00			Coffee Break	
3:00-3:30			Parallel Sessions S5.1 - S5.5	
3:30-4:00		Coffee Break		
4:00-4:30		Parallel Sessions S3.1 - S3.5	HENDYPLAN	
4:30-5:00				
5:00-5:30	<i>Welcome Reception</i>	<i>Guided Tour through Klagenfurt</i>	<i>Conference Dinner</i>	
5:30-6:00				
6:00-6:30				
6:30-7:00				
7:00-7:30		<i>Reception by the Mayor of Klagenfurt</i>		
7:30-8:00				
8:00-8:30				
8:30-9:00				
9:00-9:30				
9:30-10:00				
10:00-10:30				
10:30-11:00				

* SME IFAC TC Meeting 12:45 PM – 13:45 PM in Room **E 1.05**.

For **Detailed Program** see pages 12–17. For **Social Program** see pages 18–20.

Organization

International Program Committee (IPC)

Berç Rustem (Chair)	GB	Andrew J. Hughes Hallett	GB
Rabah Amir	DK	Nicolas Jonard	F
Hans M. Amman	NL	Michel Juillard	F
Paolo Caravani	I	Mahmoud A. Kaboudan	USA
Shu-Heng Chen	RC	Hsiao Kameda	J
Carl Chiarella	AUS	Anatolii F. Kleimenov	RUS
Christophe Deissenberg	F	Erricos Kontoghiorghes	CH
Manfred Deistler	A	Arik Melikyan	RUS
Toker Doganoglu	D	Stefan Mittnik	D
Jacob C. Engwerda	NL	Reinhard Neck	A
Gustav Feichtinger	A	Henk Nijmeijer	NL
Manfred Gilli	CH	Pieter W. Otter	NL
Petros Groumos	GR	Louis-François Pau	S
Stephen G. Hall	GB	Giorgio Pauletto	CH
Bernard Hanzon	NL	Leon Petrosyan	RUS
Richard F. Hartl	A	Svetlozar T. Rachev	USA
Heidrun Hoppe	D	Serdar Sayan	TR

NATIONAL ORGANIZING COMMITTEE (NOC)

Reinhard Neck (Chair)
Christina Kopetzky

Doris A. Behrens
Michael Getzner
Gottfried Haber

PROCEEDINGS EDITOR

Reinhard Neck

SME 2001 Secretariat

WIWI-VWL2

University of Klagenfurt

Universitaetsstrasse 65-67, A-9020 Klagenfurt, Austria/Europe

Tel: +43 463 2700 4102

Fax: +43 463 2700 4191

Email: sme2001@econ.uni-klu.ac.at

<http://www.econ.uni-klu.ac.at/sme2001>

General Information

Check-in

You will receive the list of participants, a badge to gain admission to the scientific sessions, a certificate of attendance (and payment) and a copy of the conference preprints within the symposium document case at the symposium registration / information desk (open Wednesday, Sept 6 from 2:00 – 8:00 PM; Thursday, Sept 7 and Friday, Sept 8 from 8:30 AM – 6:00 PM; Saturday, Sept 9 from 8:30 AM – 10:30 AM.).

Audio Visual Equipment

Overhead projectors will be available at the symposium venue. Any other requirements should be requested from Gottfried HABER at the registration desk as soon as possible.

Emails/phones

Internet access will be available at the symposium venue. Public phones can be found on the university campus or at post offices. Phone cards are purchased at post offices and newsagents (“Trafiken”). Note that the nearest post office to the symposium venue is located at *Universitaetsstrasse 92*.

Transportation (time and cost depend on traffic condition)

From Klagenfurt airport (Flughafen) to town (Heiligengeistplatz)

- taxi
time: approx. 10 minutes – cost: approx. ATS 120.
- bus line **40(42)** (from the airport directly to town)
time: approx. 10 minutes – cost: ATS 22.
(operates at 8:59 PM, 10:19 PM, 10:59 PM.)
- bus line **41** (from *Annabichl* directly to town)
time: 10-15 minutes – cost: ATS 22.
(operates from 5:19 AM – 11:40 PM at intervals between 10 and 20 minutes.)

From Klagenfurt main station (Hauptbahnhof) to town (Heiligengeistplatz)

- taxi
time: 5-15 minutes – cost: approx. ATS 80.
- bus line **40(42), 41** (directly to town)
time: 5-6 minutes – cost: ATS 22.
(operates from 5:14 AM – 11:40 PM at intervals between 7 and 20 minutes.)

From/to town (Heiligengeistplatz) to/from symposium venue (University)

- taxi
time: approx. 10 minutes – cost: approx. ATS 100.
- bus line **12**
time: approx. 8/10 minutes – cost: ATS 22.
(operates from 7:10 AM – 7:18 PM at intervals of approx. 15 minutes.)

Taxi phone numbers:

AAA Tel-Funktaxi Klagenfurt (+43 463) 23222 (mini-vans available)
TAXI-FUNK (+43 463) 31111
Taxi Funk Kette (+43 463) 28111

Rent-a-car:

AVIS-Autovermietung (+43 463) 55938-0
Autovermietung Europcar (+43 463) 514538
Autovermietung SIXT (+43 463) 420640
HERTZ (+43 463) 65147

Local Information

Shops around the symposium venue are open from 7:30 – 12 AM and from 3 – 6 PM, while shops in the city center are usually open from 9 AM – 6 PM. They are closed on Sundays.

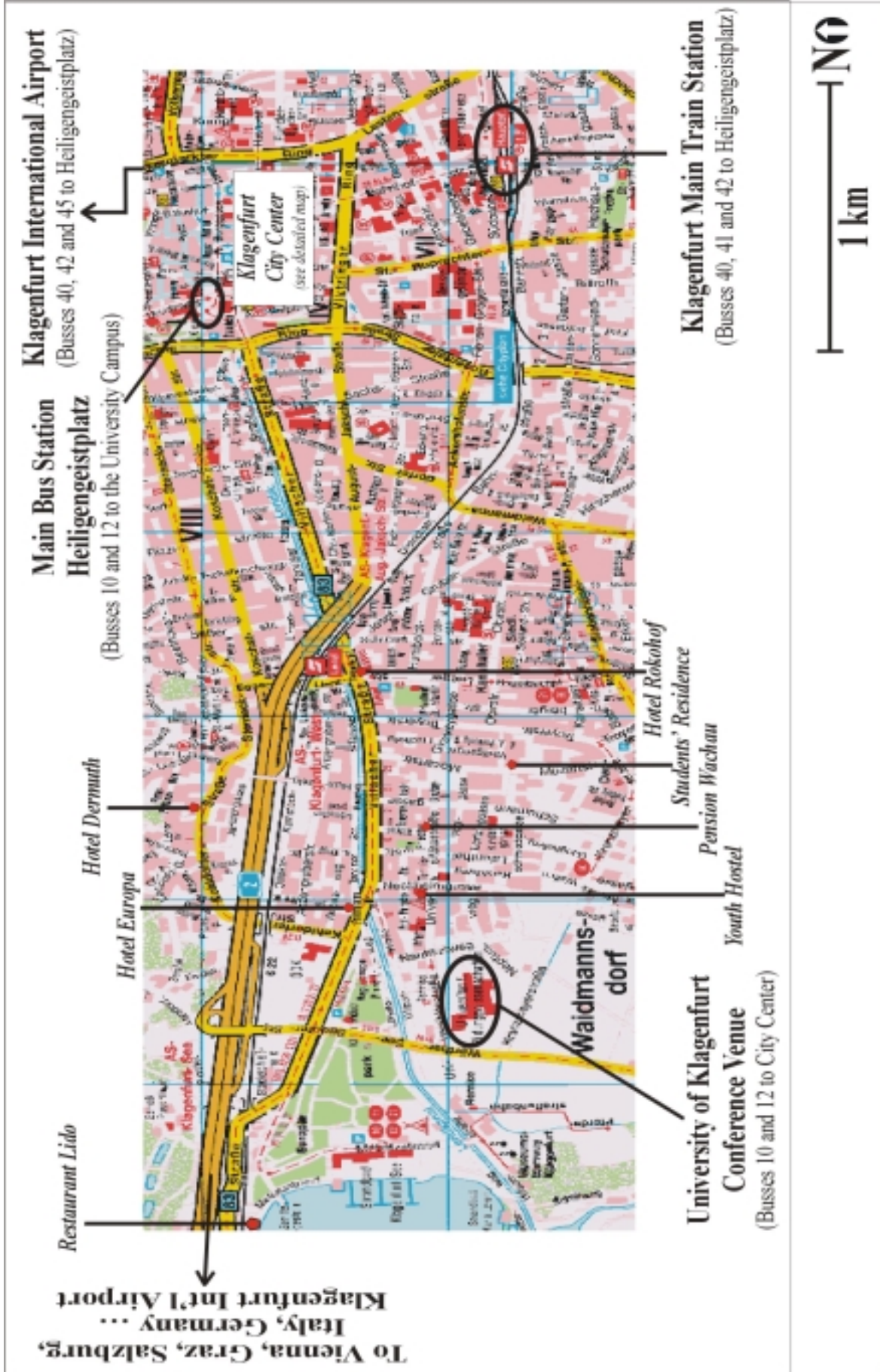
Austrian banks have varying business hours depending on location. One may find several banks close to the symposium venue: CREDITANSTALT (Universitaetsstrasse 98) is open from 9 AM – 3:30 PM, Monday to Friday. RAIFFEISEN BEZIRKSBANK (Universitaetsstrasse 33) is open from 8 AM – 12:30 PM and from 1:30 – 3:30 PM, Monday to Wednesday. On Thursday it is open from 8 AM – 12:30 PM and from 1:30 – 5:00 PM, and on Friday from 8 AM – 3:30 PM. P.S.K. (Universitaetsstrasse 92) is open from 8 – 12 AM and from 2 – 5 PM, Monday to Friday and Saturday before noon.

Post offices are open from 8 AM – 13 PM and from 2:30 PM – 5:30 PM, Monday to Friday.

Accommodation

Address / Email / Tel. / Fax / Homepage

Hotel <i>Dermuth</i>	Kohldorfer Strasse 52; Email: dermuth@klagenfurt.net Tel.: (+43 463) 212470, Fax: (+43 463) 212471 http://carinthia.nethotels.com/dermuth_klagenfurt
Hotel <i>Europa</i>	Villacher Strasse 222; Email: reception@hotel-europa.at Tel.: (+43 463) 2297220, Fax: (+43 463) 22972244 http://www.hotel-europa.at/home.html
Hotel <i>Rokohof</i>	Villacher Strasse 135; Email: hotel-rokohof@roko-reichmann.at Tel.: (+43 463) 215260, Fax: (+43 463) 2152634 http://carinthia.nethotels.com/rokohof
Pension <i>Wachau</i>	Wilfriedgasse 19; Email: office@pension-wachau.at Tel.: (+43 463) 217170, Fax: (+43 463) 217178 http://pension-wachau.at
Youth Hostel / <i>ÖJHV Jugendherberge</i>	Nechkheimgasse 6; Email: oejhv-kaernten@oejhv.or.at Tel.: (+43 463) 230020, Fax: (+43 463) 23002020 http://www.oejhv.or.at
Students' residence / <i>HochschülerInnenhaus</i> <i>„Volkshilfe“</i>	Mozartstrasse 61; Tel: (+ 43 463) 23782



Restaurants for Lunch Breaks



© Conference venue

① *Buffet*
(main building of the university)

Various hot and cold sandwiches, toast, hot sausages, goulash soup, ...

② University canteen (*Mensa*)

Low-budget menus, salad bar, grill corner, ...

③ *Uni-Wirt*

Fairly priced Austrian dishes, lunch-time menus

④ *Uni-Pizzeria*

Italian food, fish specialities

⑤ *Fillafer* bakery / coffee shop

Various sandwiches and pastries

⑥ Restaurant *Chinesischer Garten*

Chinese food, lunch-time menus

A little language transformation ...

... at the Buffet ①

Schinkenweckerl

ham sandwich (French bread or whole wheat)

Käseweckerl

cheese sandwich (French bread or whole wheat)

Schinkenkäseweckerl

ham & cheese sandwich (French bread or whole wheat)

Wurstsemmel

bread roll with sliced sausage or salami

<i>Schnitzelsemmel</i>	bread roll with Wiener schnitzel
<i>Leberkäsemmel</i>	bread roll with slice from meat loaf
<i>Mozzarellaweckerl</i>	sandwich (French bread) with mozzarella and tomatoes
<i>Frankfurter</i>	frankfurter sausages with bread roll
<i>Gulaschsuppe</i>	goulash soup
<i>Toast</i>	ham & cheese toast
<i>Heiße Brote</i>	hot sandwiches
<i>Schinken & Käse</i>	ham & cheese on whole wheat bread
<i>Tomaten & Mozzarella</i>	tomatoes & mozzarella on French bread

... at the Mensa ②

Thursday, September 6

Menu of the day	ATS 58.00
<i>Selleriecremesuppe</i>	creamed celery soup
<i>Putenspieß auf Djuwetschreis</i>	turkey skewer with rice
<i>gemischter Salat</i>	mixed salad
Alternative menu	ATS 51.00
<i>Selleriecremesuppe</i>	creamed celery soup
<i>Obstknödel</i>	sweet dumplings filled with whole fruit
<i>gemischtes Kompott</i>	stewed fruit

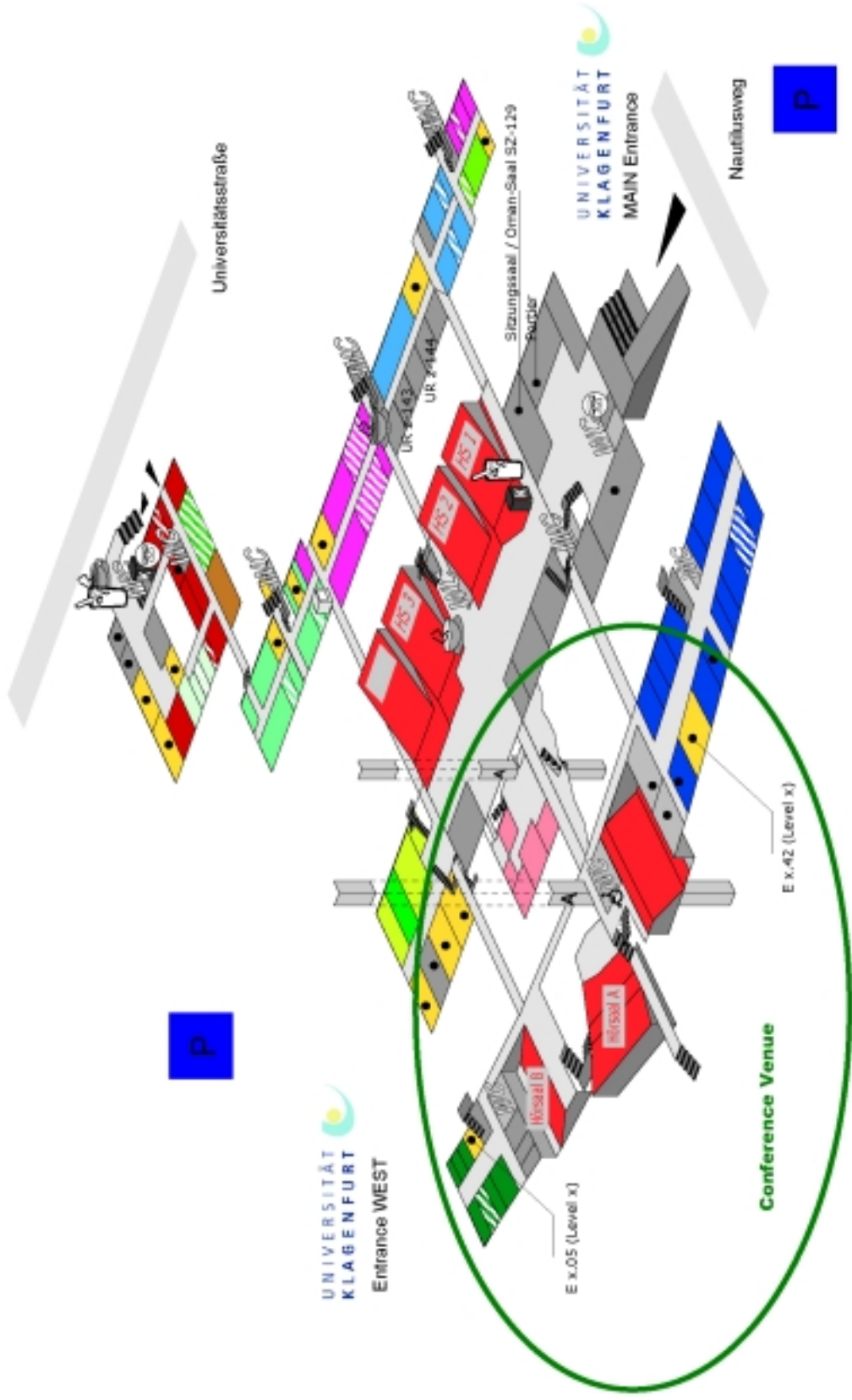
Friday, September 7

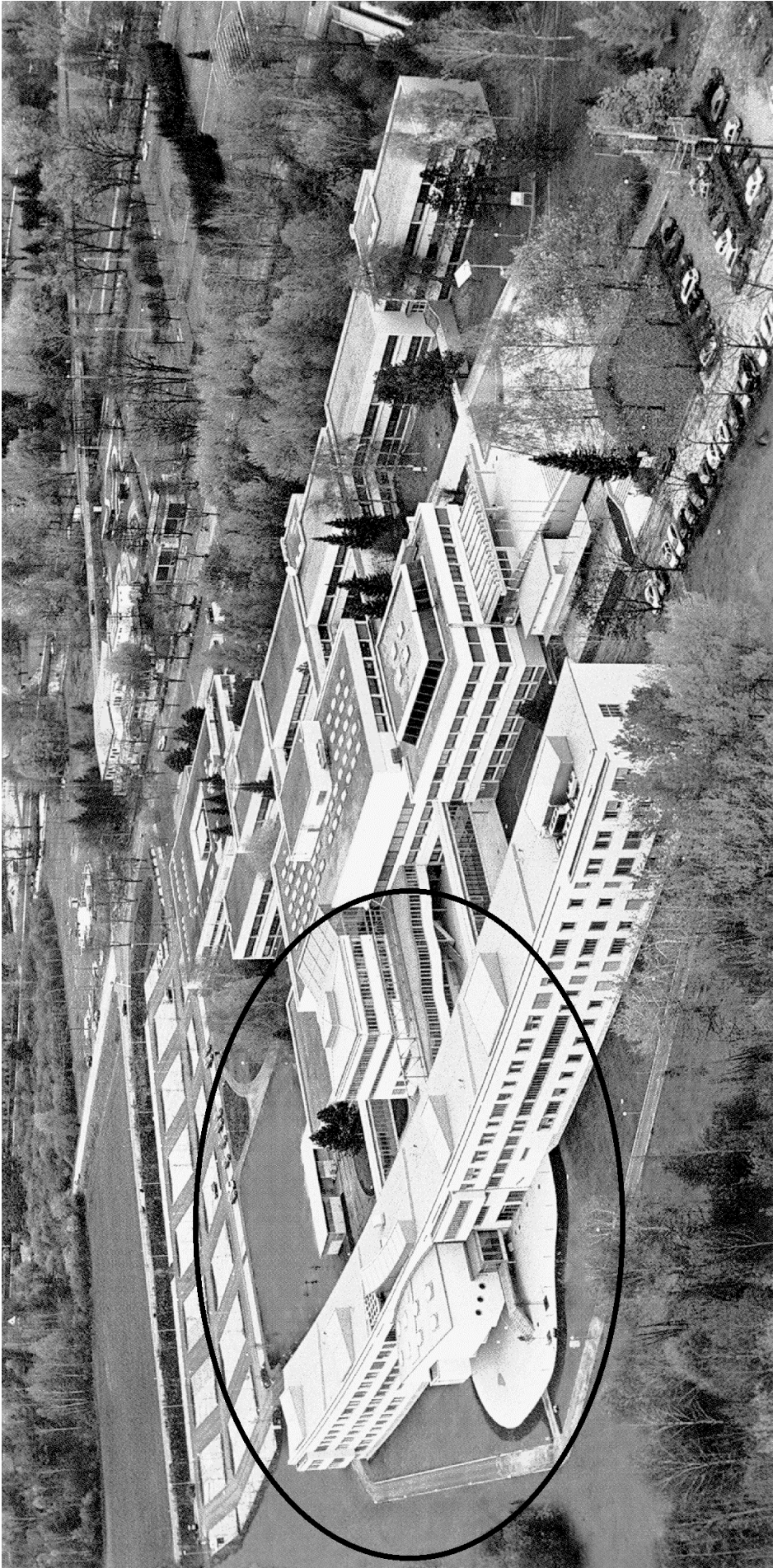
Menu of the day	ATS 58.00
<i>Nudelsuppe</i>	noodle soup
<i>Dorschfilet gebacken</i>	fried filet of cod with sauce tartar
<i>Kartoffelsalat</i>	potato salad
Alternative menu	ATS 56.00
<i>Tortellini mit Gemüsefülle</i>	tortellini with vegetable filling
<i>Basilikumsauce</i>	basil sauce
<i>bunter Blattsalat</i>	mixed salad

Grill Corner

<i>Riesenwiener vom Schwein</i>	Wiener schnitzel	ATS 67.00
<i>Lachssteak vom Grill</i>	grilled salmon steak	ATS 75.00
<i>Berner Würstel</i>	sausages with cheese, wrapped in bacon	ATS 61.00
Choice of sidings:	French fries, potatoes, rice, vegetables	
Salad Bar:	small bowl ATS 40.00 – large bowl ATS 49.00	
Market Corner:	warm snacks	
Vegetable Buffet:	4 different types of vegetables, small plate ATS 35.00 – large plate ATS 49.00	

University of Klagenfurt (Main Level - 1)





Detailed Program

Thursday, 6 September 2001

9:00 AM – 10:00 AM

CHAIR: NECK	P1.1 OPENING OF THE CONFERENCE	LECTURE HALL B
Louis-François PAU	Economic and Sectoral Modelling as Enablers in e-Commerce	

10:30 AM – 12:30 PM

Chair: KAMEDA	S1.1 Decentralized Systems 1	Room E 1.42
Kameda, Pourtallier	Paradoxical Cost Degradation under Nash Non-Cooperative Optimization in Symmetric Network Systems	
Szidarovszky, Okuguchi	Competition and Cooperation in International Commercial Fishing	
Kameda, Ohta, Hosokawa	Effects of Symmetry on Paradoxical Cost Degradation in a Nash Non-Cooperative Network System	
Chair: Chiarella	S1.2 Macrodynamic Modeling	Room E 0.05
Chiarella, Flaschel, Semmler, Zhu	A Stochastic Blanchard Model with a State-of-Market Dependent Reaction Coefficient	
Colombo, Weinrich	The Emergence of the Phillips Curve as an Attractor	
Flaschel, Gong, Semmler	A Keynesian Based Econometric Framework for Studying Monetary Policy Rules	
Chair: Rustem	S1.3 Finance 1	Room E 1.05
Bonet-Madurga, Menendez-Alonso, Gomez-Anson	Corporate Control and Capital Structure Decisions Considering Unobserved Heterogeneity	
Nikonov	On a Set-Valued Dynamic Model of Investment Portfolio Reconstruction	
Gülpinar, Rustem, Settergen	Sensitivity Analysis for Multi-Stage Stochastic Programming	
Chair: Kaboudan	S1.4 Artificial Intelligence 1	Room E 2.42
Aksoy, Basci	Social Recommendations Rather than Social Values	
Kapczynski, Zurek	Comparative Analysis of Results Obtained by Utilization of Expert System and Neural Network in Financial Analysis	
Kaboudan	Short-Term Compumetric Forecast of Crude Oil Prices	
Chair: Uebe	S1.5 Econometrics 1	Room E 2.05
Vlcek	Maximum Likelihood Estimation of Parameters in State-Space Models	
Vasicek, Fukac	Identification and Analysis of NAIP Model within State-Space Framework	
Uebe	Macromoli, a World Wide Catalogue of Economic Models	
Singh	Estimating a Third-Order Translog Demand System Using Canadian Micro-Data	

Thursday, 6 September 2001

2:00 PM – 4:00 PM

Chair: Senczyna	S2.1 Decentralized Systems 2	Room E 1.42
Gozum, Ilic	Possible Decision Tools for Transmission Service and Pricing in the Evolving Electricity Markets	
Cserny	Modelling Organizational Co-Ordination	
Senczyna	Microsimulation Modelling - The Methodology, Aims and Realization	
Novikov	Rational Centralization of Management in Hierarchical Organisations	
Chair: Neck	S2.2 Macroeconomic Models 1	Room E 1.05
Luptacik	Eco-Efficiency Analysis of an Economy	
Welfe	Growth Determinants of Poland's Economic Potential	
Weyerstraß, Haber, Neck	SLOPOL1: A Macroeconomic Model for Slovenia	
Chair: Khindanova	S2.3 Stable Non-Gaussian Models in Financial Risk Management 1	Room E 2.42
Martin, Rachev	A Stable Cointegrated VAR Model For Credit Returns with Time Varying Volatility	
Consiglio, Massabo, Ortobelli	Non-Gaussian Distribution for VAR Calculation: An Assessment for the Italian Market	
Khindanova, Atakhanova, Rachev	Stable Modeling in Energy Risk Management	
Ortobelli, Huber, Höchstötter, Rachev	A Comparison Among Gaussian and Non-Gaussian Portfolio Choice Models	
Chair: Maximov	S2.4 Artificial Intelligence 2	Room E 0.05
Witkowska, Kaminski, Staniec	Credit Granting Procedure: Artificial Neural Networks, Discriminant Analysis and K-Means Method	
Llas, Diaz-Guilera, Perez	Influence of Network Structure in a Model of Technological Evolution	
Maximov, Kornoushenko	Mathematical Basics of Construction the Graph and Computer Models for Complicated Situations	
Mazurov, Khachay	Macroneurons, Their Learning and Structuralization	
Chair: Krolzig	S2.5 Econometrics 2	Room E 2.05
Eggert, Hrycej	Model for Optimization of Leasing Rates in the Automotive Market	
Prasolov	Linear Dynamical Models with Time Lags	
Krolzig	Computer-Automated Single-Equation General-to-Specific Reduction Procedures for Vector Autoregressions	

Thursday, 6 September 2001

4:30 PM – 6:30 PM

Chair: Caravani	S3.1 Dynamic Games	Room E 0.05
Petrosjan, Villiger	Time-Consistent Agreeable Solutions in Environment Pollution Game	
Cabo, Martín-Herrán, Martínez-García	Sustainable Growth in a North-South Trade Model	
Calzolari, Lambertini	Tariffs vs. Quotas in a Model of Trade with Capital Accumulation	
Caravani	Stability of Multi-Country Unions: System Theoretic Issues and Policy Implications	
Chair: Herbert	S3.2 Macroeconomic Models 2	Room E 1.05
Coenen, Levin, Wieland	Data Uncertainty and the Role of Money as an Information Variable for Monetary Policy	
Hughes Hallett, Richter	Spectral Analysis as a Tool for Financial Policy: An Analysis of the Short-End of the British Term Structure	
Greiner, Semmler	Monetary Policy, Non-Uniqueness of Steady States and Hysteresis Effects	
Herbert, Bell	Predictive Constrained Policy Generation for Macroeconomic Systems	
Chair: Martin	S3.3 Stable Non-Gaussian Models in Financial Risk Management 2	Room E 2.42
Wörner, Racheva-Iotova, Stoyanov	Modelling a Bio-Pharmaceutical Company as a Compound Option	
Marinelli, Rachev	Stable Models in Finance with Applications to Market Risk Management	
Rachev, Khindanova, Athanasopoulos	Regulations and Risk Management in the Greek Financial Markets	
Chair: Ito	S3.4 Artificial Intelligence 3	Room E 1.42
Ito	Optimal Neuro-Predictive Stabilization Policy for National Balance Model of Japan	
Lalla, Facchinetti, Mastroleo	A Fuzzy Expert System for Evaluating University Teaching System	
Visudhipan, Ilic	An Agent-Based Approach to Modeling Electricity Spot Markets	
Marostica	An Econometric Problem and a Heuristic-Semiotic Solution	
Chair: Kontoghiorghes	S3.5 Econometrics 3	Room E 2.05
Ratsimalahelo	Specification of VARMA Echelon Form Models	
Stecha, Trinkewitz, Vasicek, Fukac	Alternative Models of Adaptive and Near-Rational Expectations - Classification by Bootstrap Filter	
Foschi, Kontoghiorghes	Estimating SUR Models with Autoregressive Disturbances	
Fritz, Kurzmann, Pointner, Streicher, Zakarias	STYR-I-O: A Regional Econometric Input-Output Model for Styria	

Friday, 7 September 2001

9:00 AM – 10:00 AM

CHAIR: HABER	PLENARY SESSION P2.1	LECTURE HALL B
Volker WIELAND	Monetary Policy under Uncertainty: Rules, Optimal Control and Robustness	

10:30 AM – 12:30 PM

Chair: Engwerda	S4.1 Differential Games	Room E 1.05
Deissenberg, Alvarez-Gonzalez	Pareto-Improving Cheating in an Economic Policy Game	
Weeren	A Geometric Approach to Infinite Horizon Linear Quadratic Differential Games	
Engwerda, van den Broek, Schumacher	Soft-Constrained Robust Feedback Nash Equilibria	
Jank, Kremer, Kun	Non-Symmetric Riccati Theory and Open-Loop Nash Games on the Infinite Time Horizon	
Chair: Dolgopyatov	S4.2 Macroeconomic Models 3	Room E 2.42
Dolgopyatov	Extreme States of Liberty Market Economic Systems and Macroeconomics Regulators Synthesis	
Kendall, Binner, Gazely	Evolutionary Strategies - A New Macroeconomic Policy Tool?	
Zhilyaev	Cyclic Dynamics of Ukraine's Non-Monetary Economies	
Chair: Hoeg	S4.3 Finance 2	Room E 0.05
Hoeg	Non-Parametric Estimation of Diffusion Paths Using Wavelet Scaling Methods	
Kleparskiy	Self-Adjusting of Attraction Channel of Stock Market	
Pötzelberger, Sögner	Equilibrium and Learning in a Non-Stationary Environment	
Chair: Minford	S4.4 Computational Economics 1	Room E 2.05
Juillard	Taylor Approximations of the Solution of Rational Expectation Models: A C++ Implementation	
Asprey, Rustem, Zakovic	Minimax Algorithms with Applications in Dynamic Model Building	
McCain	Aspiration, Arousal, and Annealing: Flexible Learning of Optimal Strategies for Games	
Minford, Webb	Estimating Large Rational Expectations Models by FIML - A New Algorithm with Bootstrap Confidence Limits	
Chair: Getzner	S4.5 Regional and Sectoral Models	Room E 1.42
Hrycej, Eggert	Demand Model of Automobile Life Cycle Based on Temporal Substitution	
Holubiec, Malicka	Regional Strategy and Sustainable Development	
Holubiec, Petriczek	Models for Railway Traffic Management	

2:00 PM – 3:00 PM

CHAIR: NECK	PLENARY SESSION P3.1	LECTURE HALL B
Berç RUSTEM	Stochastic Optimization and Worst-Case Design Strategies for Risk Management	

Friday, 7 September 2001

3:30 PM – 5:30 PM

Chair: Engwerda	S5.1 Applied Dynamic Games	Room E 1.05
Douven	Regulated Competition in Health Insurance Markets	
Behrens, Neck	The Structure of Optimal Decision Rules in a Monetary Union	
van Aarle, Di Bartolomeo, Engwerda, Plasmans	Coalitional Behavior in an Open-Loop LQ-Differential Game for the EMU	
Chair: Sayan	S5.2 Recent Trends in the Use of Dynamic Overlapping Generations General Equilibrium Models in Economic Analysis	Room E 0.05
Conde-Ruiz, Giménez, Perez-Nievas	Endogenous Fertility, Pension Programs and Intergenerational Welfare	
Sayan	Trade and Labor Flows between Countries with Young and Aging Populations	
Tosun	Asymmetric Population Aging, Open Economy, and Fiscal Policy	
Juillard et INGENUE	INGENUE: An Applied International Overlapping Generations Model	
Mercenier, Mérette	The Inter-Regional Consequences of Population Ageing in Canada	
Chair: Dmitruk	S5.3 Firm Models 1	Room E 2.42
Büskens, Chudej, Winderl	Parametric Sensitivity Analysis of a Realistic Concern Model	
Dmitruk	Optimization of the Dynamic Model of the Firm	
Traxl, Fürst, Zeichen	Management Support Tool for Complex Production Plant Scenarios	
Chair: Kontoghiorghes	S5.4 Computational Economics 2	Room E 2.05
Gatu, Kontoghiorghes	A Parallel Algorithm for Computing all Possible Subset Regression Models Using the QR Decomposition	
Mrkaic, Pauletto	Krylov Methods and Preconditioning in Computational Economics Problems	
Gilli, Roth, Sceia	Heuristic Optimization Techniques to Solve Large Scale Model Selection Problems	
Winker, Gilli	Indirect Estimation of the Parameters of Agent-Based Models of Financial Markets	
Chair: Haber	S5.5 Investment	Room E 1.42
Skantze, Ilic	Investment Dynamics and Long-Term Price Trends in Competitive Electricity markets	
Bakhtadze, Lototsky, Maximov	Identification-Based Investment Policy for Demand Encouragement	
Arkin, Slastnikov	Stochastic Model of Tax Benefits Influence on Investment Timing	

5:30 PM – 6:00 PM

HENDYPLAN	TROLL DEMONSTRATION & APPLICATION	LECTURE HALL B
------------------	--	-----------------------

Saturday, 8 September 2001

9:00 AM – 10:00 AM

CHAIR: BEHRENS	PLENARY SESSION P4.1	LECTURE HALL B
Tamer BAŞAR	Paradigms for Robustness in Controller and Filter Designs	

10:30 AM – 12:00 AM

Chair: Melikyan	S6.1 HJBI Equations in Dynamic Game Models	Room E 0.05
Melikyan	Singular Characteristics of HJBI Equation in State Constraint Optimal Control Problems	
Tarasyev	Coordination of Long-Term and Short-Term Payoffs in Dynamic Bimatrix Games	
Shamaev	The Limit Optimal Value of the Investment Portfolio Index	
Chair: Neck	S6.2 Towards a Decision-Support System for Macroeconomic Policy-Makers	Room E 1.05
Neck	Towards a Decision-Support System for Macroeconomic Policy-Makers	
Haber	The OPTCON Algorithm	
Behrens	The OPTGAME Algorithm	
Neck	OPTCON and OPTGAME in Action	
Chair: Maximov	S6.3 Firm Models 2	Room E 2.05
Kacprzak, Kaczmarczyk	Validation by Simulation of Enterprise Models	
Kornoushenko, Maximov	Cognitive Model for Correction and Tactical Management of the Enterprise Activity	
Timchenko, Igumnova	New Adaptive Balance of Causes Method for Economic Systems Modeling and Sustainable Development	

12:00 AM – 1:00 PM

CHAIR: NECK	CLOSING OF THE CONFERENCE	LECTURE HALL B
--------------------	----------------------------------	-----------------------

Social Program

Wednesday, Sept 5	6:00 PM:	WELCOME RECEPTION
Thursday, Sept 6	7:00 PM:	GUIDED TOUR
	8:00 PM:	EVENING RECEPTION
Friday, Sept 7	7:30 PM:	CONFERENCE DINNER

Guided Tour through Klagenfurt

You are invited to join a guided tour through Klagenfurt and its courtyards. Busses will depart from university at the bus stop in front of the main entrance at approx. 6:30 – 6:40 PM after the last track of parallel sessions has ended.

The guided tour will start at 7:00 PM at the tourist information on *Neuer Platz* and lasts about an hour. The tour will end at *Kinoplatz*, where the evening reception takes place.

Accompanying persons can buy a combined ticket for the guided tour and the evening reception for ATS 70.00 (€ 5.09).

Evening Reception

The Mayor of Klagenfurt, Dkfm. Harald Scheucher, cordially invites you to an evening reception on September 6, 2001, at 8:00 PM, at the *Gemeindezentrum St. Ruprecht, Kinoplatz 3*, Klagenfurt.

If you do not wish to participate in the guided tour, the *Kinoplatz* can be reached from the city center (*Heiligengeistplatz*) by busses **81** and **85** (and **40(42)** and **41**, if you take a walk from the main station (*Hauptbahnhof*) to *Kinoplatz*).

At 10:00 PM a bus will depart from *Kinoplatz* and stop at all the conference hotels and the students' residence.

Accompanying persons can buy a combined ticket for the guided tour and the evening reception for ATS 70.00 (€ 5.09).

Conference Dinner

The conference dinner will take place at 7:30 PM on Friday, September 7, 2001 at Restaurant *Lido* in the West Bay of Lake *Wörthersee*. See map on page 7. You can either go there on your own if you choose to return to your hotel prior to the dinner or walk with us along the *Lend* channel past *Minimundus* through the enchanting *Europapark* from university at 7:15 PM. Meeting point is the main entrance of the university.

At 11 PM a shuttle bus to the hotels will be available.

Accompanying persons can buy a ticket for the conference dinner for ATS 600.00 (€ 43.60).

Program for Accompanying Persons

For the trips on Thursday, you have to register for each trip and pay the tickets at the registration desk by 4:00 PM on Wednesday! Busses depart in the center of Klagenfurt, at the *Neuer Platz* near the town hall and the central bus station *Heiligengeistplatz*. The tickets do not include tolls, entrance fees and tickets for boat trips.

Thursday, September 6

Carinthian Lakes

Departure: 12.45 PM, tickets: ATS 200.00 (€ 14.53), ½- day trip (back in Klagenfurt: 7:30 PM)
There are more than 200 small and large lakes in Carinthia – the bus takes you to the *Ossiacher See* up to the beautiful *Millstätter See*, where you can visit a medieval monastery and the 1,000 years old lime tree. After a visit of the renaissance castle *Porcia* (town of *Spittal an der Drau*), the *Faaker See* is on your way back to Klagenfurt.

Venice

Departure: 5:30 AM, tickets: ATS 480.00 (€ 34.88), 1-day trip (back in Klagenfurt: 8:30 PM)
Visit beautiful Venice and enjoy Italian life style for one day!

Senza Confini Tour

Departure: 8:30 AM, tickets: ATS 320.00 (€ 23.25), 1-day trip (back in Klagenfurt: 7:00 PM at the latest) – PASSPORT needed!
This tour takes you from Carinthia, to Italy and Slovenia. The first stop is in *Tarvisio* with its famous Italian leatherware and knitware market. The trip then continues via the *Save* valley past the skiing resorts *Planica* and *Kranjska Gora* to *Bled* where the second stop is planned. You can take the boat to the island in the middle of the lake to visit the pilgrimage church “Mary in the Lake” or walk to the castle which can also be reached by horse carriage. The way back takes you over the picturesque *Wurzenpass*.

Every-Day Program – Things to See and Do

“The Town in the Middle Ages” – Carinthian Provincial Exhibition at the beautiful medieval town of Friesach

The exhibition is open from 9 AM to 6 PM every day; admission: ATS 90.00 (€ 6.54); train tickets (round trip): ATS 140.00 (€ 10.17). Reductions are available for groups of 15 and more. Please see the brochure in your conference bags for more information!

Friesach, the oldest town in Carinthia, is the perfect location for the 2001 Carinthian Provincial Exhibition – the Middle Ages are everywhere: Impressive castles, countless churches, the town walls and the town moat still filled with water. The *Fürstenhof* and

Granary have been extensively renovated and form the center of the Provincial Exhibition. The surrounding areas contain a wide variety of historically unique monuments in an enchanting and natural landscape.

Information is also available on the internet: www.landesausstellung-friesach.at

Trains depart from the main station (*Klagenfurt Hauptbahnhof*) to *Friesach* at:

AM: 7:10 (arr. 8:05), 8:50 (arr. 9:30), 9:10 (arr. 10:05), 12:02 (arr. 12:57), 12:50 (arr. 1:30 PM); **PM:** 1:35 (arr. 2:33), 3:10 (arr. 4:05), 4:50 (arr. 5:30)

Trains depart from *Friesach* to the main station (*Klagenfurt Hauptbahnhof*) at:

AM: 10:28 (arr. 11:07), 11:54 (arr. 12:48); **PM:** 1:06 (arr. 1:59), 1:54 (arr. 2:48), 2:28 (arr. 3:07), 3:06 (arr. 3:59), 3:54 (arr. 4:48), 5:20 (arr. 6:12), 5:54 (arr. 6:48), 6:28 (arr. 7:07), 7:55 (arr. 8:48), 9:10 (arr. 9:59), 10:28 (arr. 11:08)

Fascination Minimundus – The Small World in Klagenfurt

Minimundus is open from 9 AM to 5 PM; tickets: ATS 130.00 (€ 9.45). Reductions are available for groups of 20 and more. Please see the brochure in your conference bags for more information!

Go all around the World, here at *Minimundus* you'll find the most beautiful buildings, ships and railways from all 5 continents. There are over 170 models from 53 countries, accurate in every detail, finished to a scale of 1:25. *Minimundus* is just around the corner from the university.

Information is also available on the internet: www.minimundus.at

ENJOY YOUR STAY IN CARINTHIA!